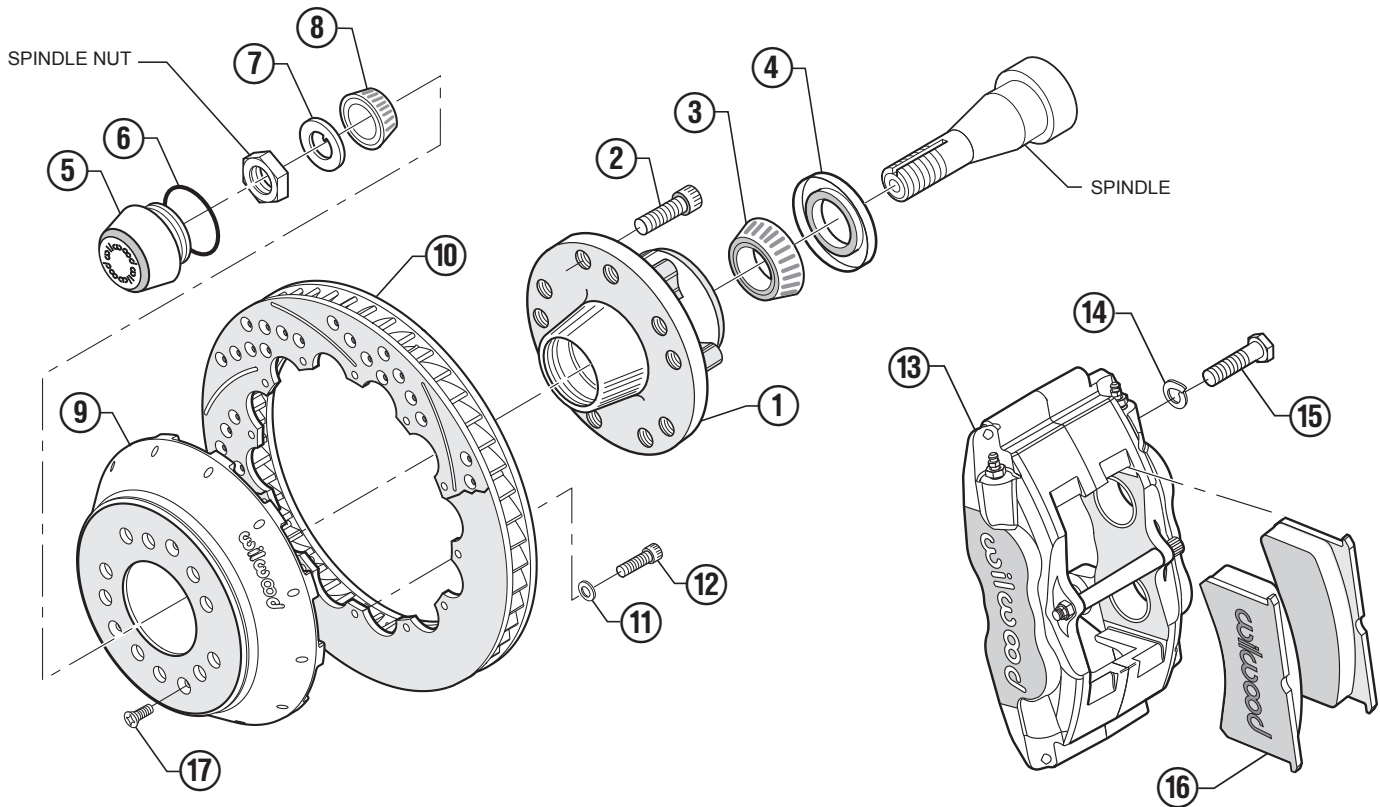


Typical 12.90" and 14.0" Zero Offset™ Installation with Superlite Calipers.



NOTE 1: ROTORS CAN BE PURCHASED PLAIN, SLOTTED ONLY, DRILLED AND SLOTTED OR FLOATING.
 NOTE 2: ROTORS CAN BE PURCHASED WITH STRESS RELIEVED AND/OR BALANCED.
 NOTE 3: DRAWING SHOWS TYPICAL HAT AND ROTOR FOR 12.90" AND 14.0" ROTORS.
 NOTE 4: MOUNTING OF BRACKET WILL DEPEND ON SPINDLE APPLICATION.
 NOTE 5: DRY FIT ALL PARTS BEFORE FINAL ASSEMBLY.
 NOTE 6: SEE SPECIFICATIONS FOR TORQUE REQUIREMENTS ON BOLTS WITH SAFETY WIRE OR LOCTITE.